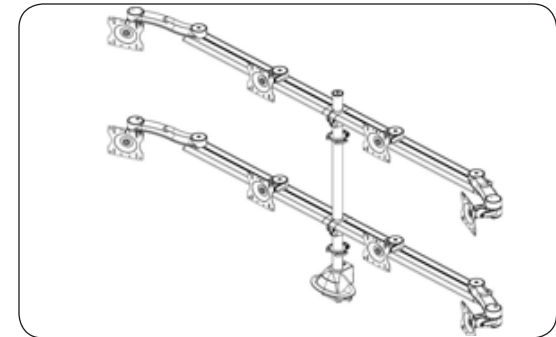
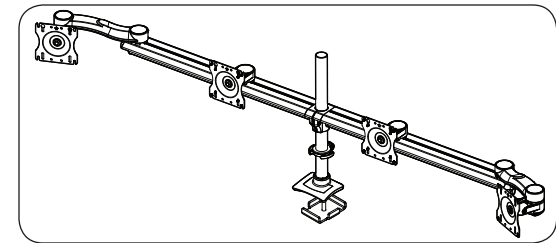
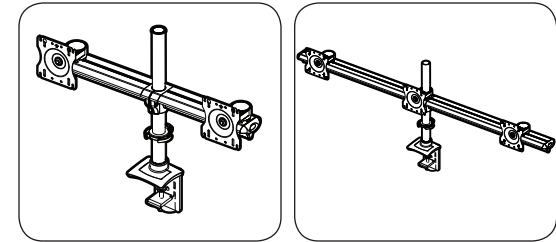
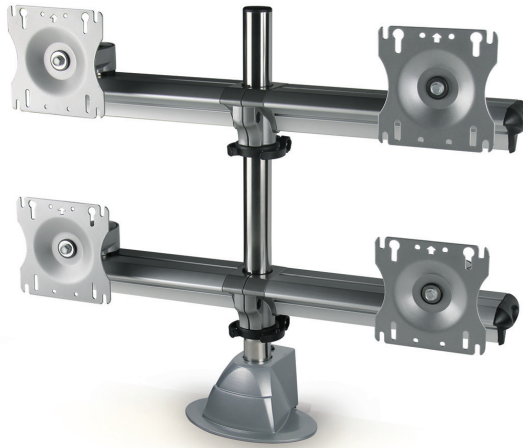


Multi-Screen Monitor Mount

- Market Need – Ability to mount multiple monitors for optimal ergonomic viewing comfort
- Design Challenges – Structural stability, attachment method, adjustability for multiple screen sizes and weights
- Solution – Modular monitor support system that can accommodate various screen arrays. Design includes:
 - Extruded beam allowing for multiple monitor attachment
 - Post base with grommet or clamp mounting
 - Available with tilt, swivel and rotational VESA mount head, or with arm extensions to provide a parabolic array
 - Integrated cable management
 - Available in Silver & Black finish



- Modular design allowing for screen arrays ranging from 2 to 8 monitors
- VESA Compliant mounting with 75mm x 75mm & 100mm x 100mm hole pattern
- Grommet and clamp mounting options