

## Closet Rods

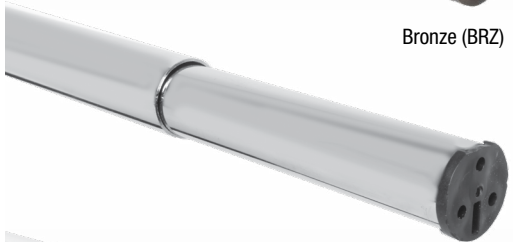
Heavy-Duty Construction  
For 30" to 120" Applications  
Easy to Install



Brushed Nickel (BN)



Bronze (BRZ)



Chrome (CH)



White (WH)

## Heavy-Duty Adjustable Closet Rods

**Applications** An adjustable closet rod for use in any closet.

**Mounting** Wall or Cabinet

**Material** 18-gauge steel and plastic

**Finishes** Brushed Nickel (BN), Bronze (BRZ), Chrome (CH) and White (WH): Long-lasting, corrosion resistant finish

**Features** Adjustable heavy-duty closet rods are quick and simple to install while creating a quality finished look. Included flanges allow for easy installation and then quick attachment of the adjustable rods.

- Easy installation
- No cutting required
- Outer diameter: 1-1/4"
- Hardware included
- Available from open stock

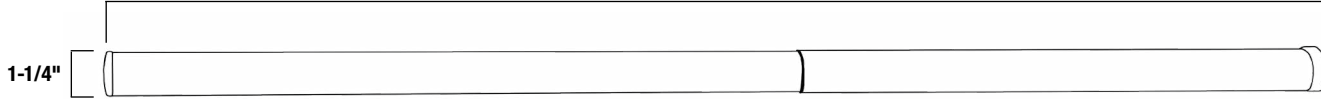
\*Contact KV Customer Service for more information.

### Closet-Pro HD™ Heavy-Duty Adjustable Closet Rods

Standard Pack (6 per carton)				
Size	Brushed Nickel (BN)	Bronze (BRZ)	Chrome (CH)	Warm White (WT)
30" to 48"	RP0020-30/48BN	RP0020-30/48BRZ	RP0020-30/48CH	RP0020-30/48WT
48" to 72"	RP0020-48/72BN	RP0020-48/72BRZ	RP0020-48/72CH	RP0020-48/72WT
72" to 120"	RP0020-72/120BN	RP0020-72/120BRZ	RP0020-72/120CH	RP0020-72/120WT

# Heavy-Duty Adjustable Closet Rods

30" - 48", 48" - 72", 72" - 120"



## 1. Product Name

Closet-Pro HD™ Heavy-Duty Adjustable Closet Rods.  
An extendable closet rod for use in any closet type setting.

## 2. Manufacturer

Knap & Vogt Manufacturing Company  
2700 Oak Industrial Dr. NE, Grand Rapids, MI USA 49505-6026  
616.459.3311 | [www.kv.com](http://www.kv.com)

## 3. Product Description

**Basic Use:** Closet-Pro HD™ Heavy-Duty Adjustable Closet Rods are manufactured for quick installation and are perfect for any type closet setting.

**Composition and Materials:** Plastic and 18-gauge Steel

**Sizes:** 30" to 48", 48" to 72", 72" to 120"

**Lengths:** 30" to 48", 48" to 72", 72" to 120"

**Finishes:** Brushed Nickel (BN), Bronze (BRZ), Chrome (CH) and White (WH).

(Some finishes may not be available in some lengths.)

## 4. Technical Data

**Applicable Standards:** Closet-Pro HD Heavy-Duty Adjustable Closet Rods are tested to meet or exceed ANSI performance standards as established by BHMA.

These load limits are intended to be used as general guidelines only, and no warranty — expressed or implied — is made by Knap & Vogt.

Results were obtained by laboratory testing in accordance with ANSI/ BHMA A156.9-2003 performance standard. Actual use conditions will typically result in lower load capacity than laboratory conditions.

Representative testing in a fully configured application is the only way to assure proper performance, durability, and safety. Contact KV for verification testing service of your specific application.

### Environmental Considerations:

**Environment:** Excessive humidity, salts, or other chemical agents can corrode the finish and attack metal or plastic components.

**Fastening:** Inadequate or incorrect fasteners can result in the flanges and rods pulling loose and causing damage.

**Alignment:** Improper flange alignment can result in a closet system that is ineffective and unsafe.

## 5. Installation

For maximum loading capacity, flanges and closet rods should be mounted into studs or a solid frame. Mark installation locations of flanges and secure them to studs or solid frame. Always install additional supports or brackets in center of application if closet rod is 5 feet, or 32" intervals into wall studs if longer than 5 feet.

## 6. Availability and Cost

**Availability:** Knap & Vogt (KV) products are available from stocking distributors and through KV Representatives worldwide.

**Cost:** Current pricing is available from area KV Representatives. Please call for the nearest representative at: 1.800.253.1561.

## 7. Warranty

**Limited Lifetime Warranty:** Knap & Vogt offers its standard Limited Lifetime Warranty to the initial purchaser of commercial products. This warranty covers defects in materials and workmanship which occur during normal use, and the remedy is limited to repair or replacement of defective products, at KV's option. Certain types of defects and damage are excluded from warranty coverage, costs and expenses are not covered, and additional restrictions apply. A copy of the Limited Lifetime Warranty, with all warranty details, limitations and disclaimers, is available on the Customer Care Connection location at [www.kv.com](http://www.kv.com) or from KV Customer Service, 2700 Oak Industrial Drive, Grand Rapids, MI 49505, 1.800.253.1561.

## 8. Maintenance

Closet-Pro HD Heavy-Duty Adjustable Closet Rods require no maintenance. Inspect for proper fit periodically and adjust when necessary. Replace as required or recommended by application.

## 9. Technical Services

Knap & Vogt and area representatives can assist with any application. For further information, or for the name of the representative nearest you, please call Knap & Vogt Customer Service: 1.800.253.1561 or visit our website at: [www.kv.com](http://www.kv.com).

## 10. Filing Systems

Additional product information, data sheets, application sheets, and a full catalog are available upon request from Knap & Vogt.



**KNAPE & VOGT**

2700 Oak Industrial Dr. NE  
Grand Rapids, MI 49505-6026 USA  
1.800.253.1561 | 616.459.3311  
Fax: 877.636.3290  
[www.kv.com](http://www.kv.com)

**BHMA** Knap & Vogt shelving products follow the ANSI testing standards established by BHMA.

*This and other KV literature is available for download at [www.kv.com](http://www.kv.com) > Resource Library  
Knap & Vogt reserves the right to change product specifications at any time without notice and without incurring responsibility for existing units. This information conforms to editorial style prescribed by The Construction Specifications Institute.*

*©2016 Knap & Vogt. KV and the KV logo are trademarks of Knap & Vogt.*

OL2447/1016