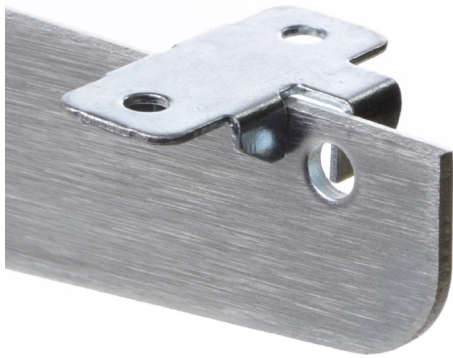




213 Series Shelf Rest



Applications The Knap & Vogt 213C ZC Shelf Support Clip is ideal for anchoring shelves to 186LL and 187LL Series Shelf Brackets. The unique snap-in design holds the flat shelf surface in place and allows both glass and other solid surface quick and tool-free installations. The (129 RUB) Rubber Bumpers, sold separately, provide an anti-skid feature that prevents the shelves from sliding and hold them securely in place.

Mounting Use with 186LL & 187LL Series Brackets

Material Steel

Finishes Zinc (ZC)

- Features**
- Snap-in design provides a secure and quick installation
 - Convenient for all solid surface installations (glass, wood, metal, etc.)
 - Easily add rubber bumpers for glass installations
 - Designed as a center shelf support; not for end installations
 - For the use with 186LL and 187LL Series Shelf Brackets
 - Tool-Free Installation

**Contact KV Customer Service for more information.

Center Shelf Support Clip

(Use with 186LL and 187LL Series Shelf Brackets.)

Standard Pack (100/carton)

Zinc (ZC)

213C ZC

Shelf Support Clip Dimensions

| Width | Height | Depth | Item Weight |
|--------|--------|-------|-------------|
| 1-1/2" | 3/8" | 1" | .016 lbs. |

Carton Dimensions

| Width | Height | Depth | Carton Weight |
|-------|--------|--------|---------------|
| 6" | 2-1/5" | 3-3/4" | 1.7 lbs. |



KNAPE & VOGT

2700 Oak Industrial Dr. NE
 Grand Rapids, MI 49505-6026 USA
 1.800.253.1561 | 616.459.3311
 Fax: 877.636.3290
 www.kv.com